

**3 Album Slipcase**

**Cut** \_\_\_\_\_

**Fold** \_\_\_\_\_

**Bleed** \_\_\_\_\_

ALBUM SET SLIPCASE - 2-piece construction  
 Outer/front wrap and inner/back wrap/label  
 re: 12-7/16 x 12-7/16 x 7/8" slipcase

Layouts include wrap-around allowance  
 for more accurate panel placement

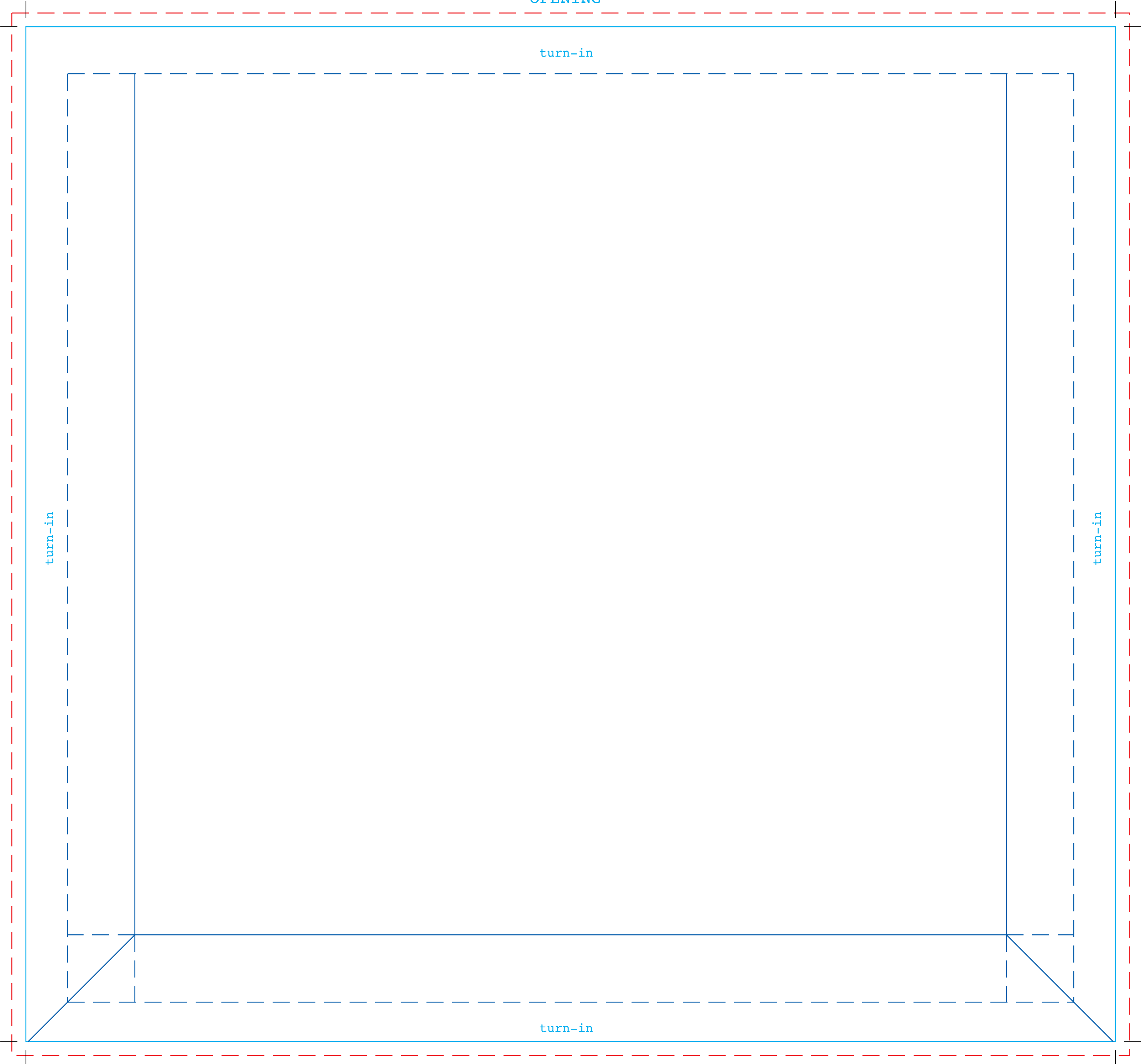
- stock - 70# litho C/1/S - NOTE GRAIN DIRECTIONS INDICATED
- trimmed sizes as shown (ref. crop marks)
- PLEASE RETAIN OUR CROP MARKS FOR REFERENCE
- MINIMUM 1/8" PRINT BLEED ALL AROUND OUTSIDE PERIMETERS SHOWN
- extend all graphics/backgrounds through corners, turn-ins and bleeds
- non-gluable varnish/UV requires corner masking: provided by request
- \*\* IF AQUEOUS COATING, NO KNOCKOUTS REQUIRED
- \*\* any coatings etc. MUST be animal glue compatible

September 7/22

**OUTER/FRONT wrap**

- trimmed size: 15-15/16 x 14-27/32"

<< PAPER GRAIN >>  
 OPENING



**BACK label**

- trimmed size: 12-7/16 x 13-1/8"

<< PAPER GRAIN >>  
 OPENING

